



# Water as a part of CSRD reporting

Minna Pirilä, Tuomas Suikkanen, Daniel Weiss  
AFRY



# Contact



**MINNA PIRILÄ (D.Sc.)**

Head of Strategic Business Development  
Water Business Unit  
AFRY Finland Oy

Tel. +358 44 319 0981  
minna.pirila@afry.com



**TUOMAS SUIKKANEN**

Consultant  
Sustainability Consulting  
AFRY Management Consulting

Tel. +358 50 473 0509  
tuomas.suikkanen@afry.com



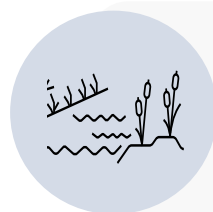
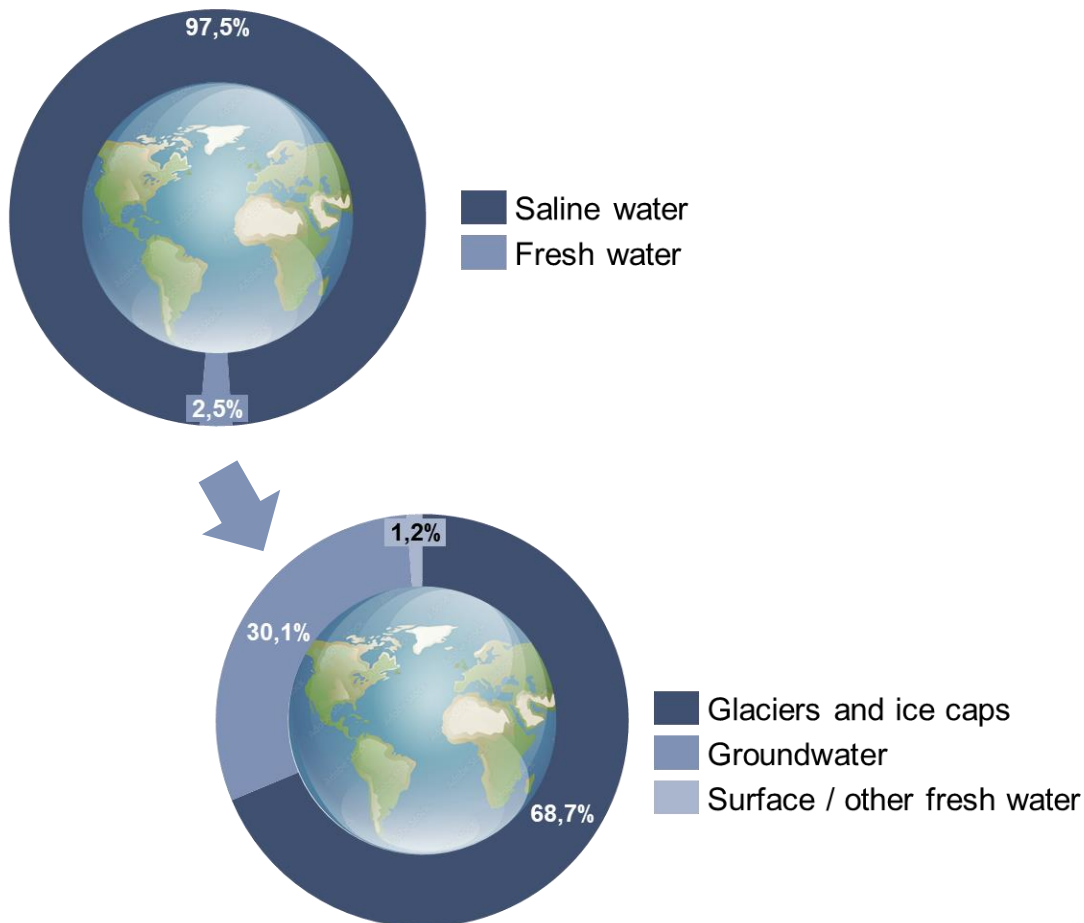
**DANIEL WEISS**

Principal, Country Lead  
Sustainability Consulting Germany  
AFRY Management Consulting

Tel. +358 44 319 0981  
daniel.weiss@afry.com

INTRODUCTION

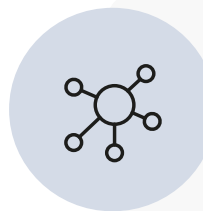
“Water is the driving force of all nature.” Leonardo da Vinci



Water is the world’s most precious and exploited resource, directly linked to climate change, biodiversity loss and human rights



Water is at the core of sustainable development

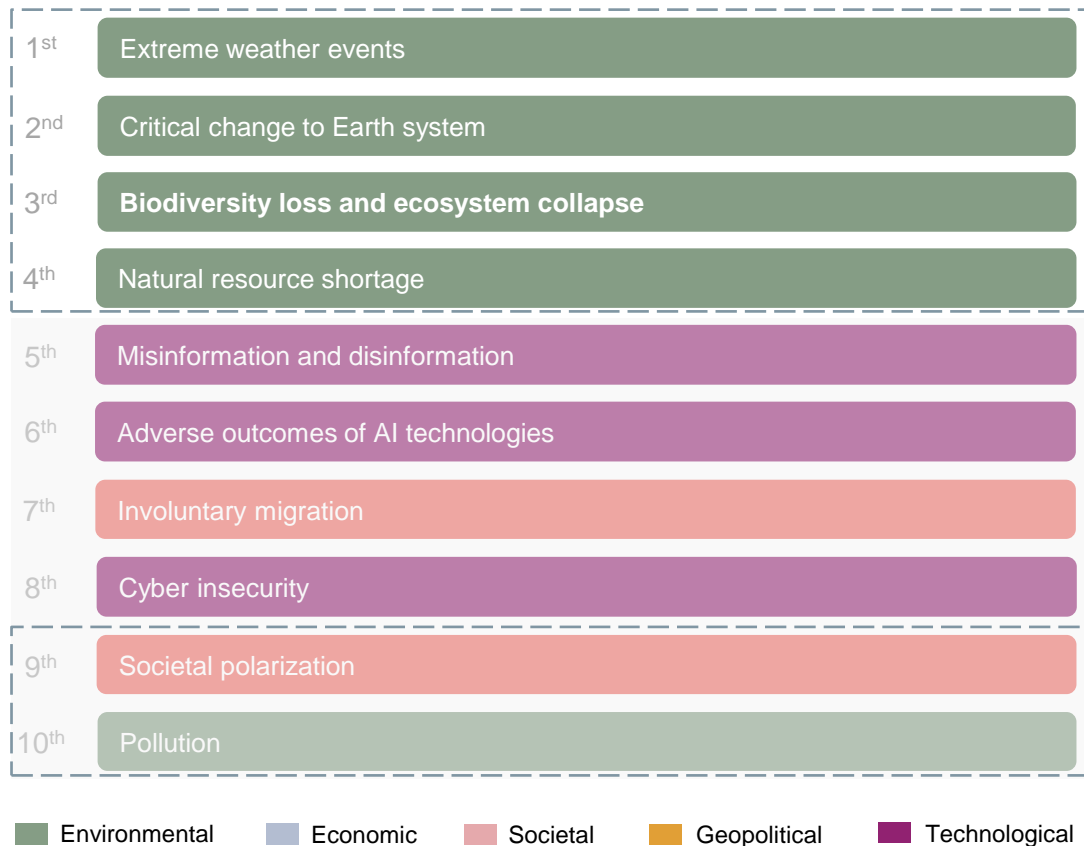


Water plays a crucial role in all businesses and industries. It is used in own operations as well as in the value and supply chains

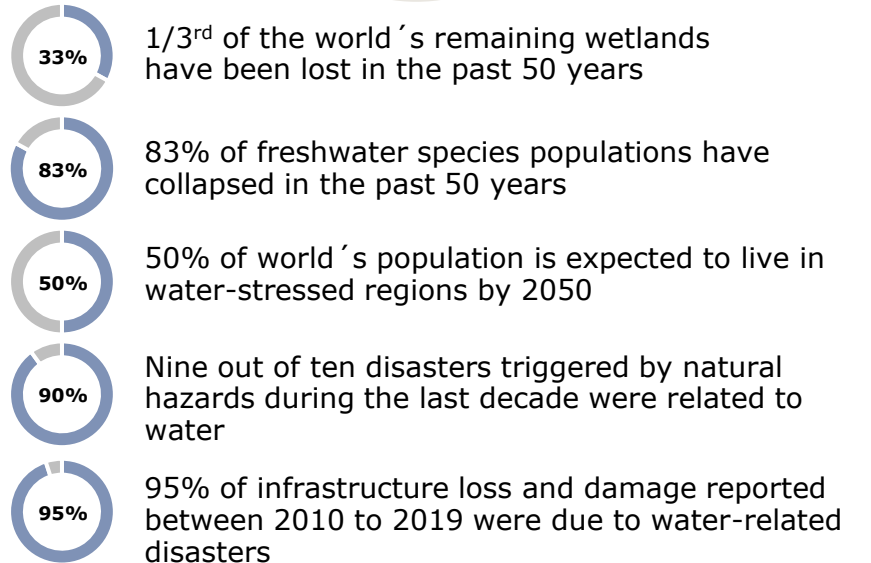
INTRODUCTION

Water related risks for business are increasing as we see more serious draughts, floodings and contamination of water

Global risks ranked by severity over the long term (10 years)<sup>1</sup>



“ 60% of global GDP (\$58 Trillion) is threatened by water crisis<sup>2</sup> ”



<sup>1</sup>WEF Global Risks Report (2024), <sup>2</sup>WWF High Cost of Cheap water (2023)

# Global drivers push towards more strategic water management

## DRIVERS



**Regulation**



**Finance**



**Shareholder and consumer demands**



**Risk management**



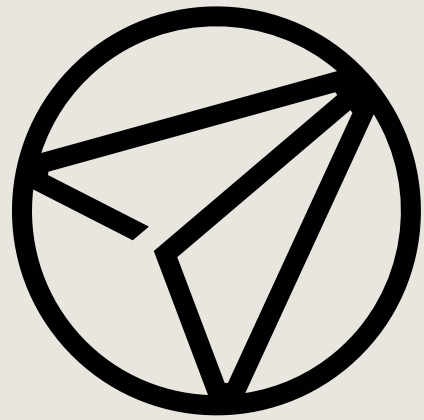
**Business opportunities**

## THE PRIORITIZED SECTORS IN FINLAND TO DEVELOP THEIR WATER STEWARDSHIP PRACTICES

- Agriculture and livestock farming, fish farming
- Food industry and trade
- Mining operations and mining industry
- Battery industry
- Forestry, pulp, paper, and cardboard industry
- Hydropower
- Chemical industry
- Municipalities and cities, including public procurement, water and wastewater management



# Making Future



AFRY